

**LèPRESSO**



**LePresso**

**Carbonator Instant Sparkling Water  
with Pressure Release Button**

SKU: LPCFFM0017

# Table of Contents

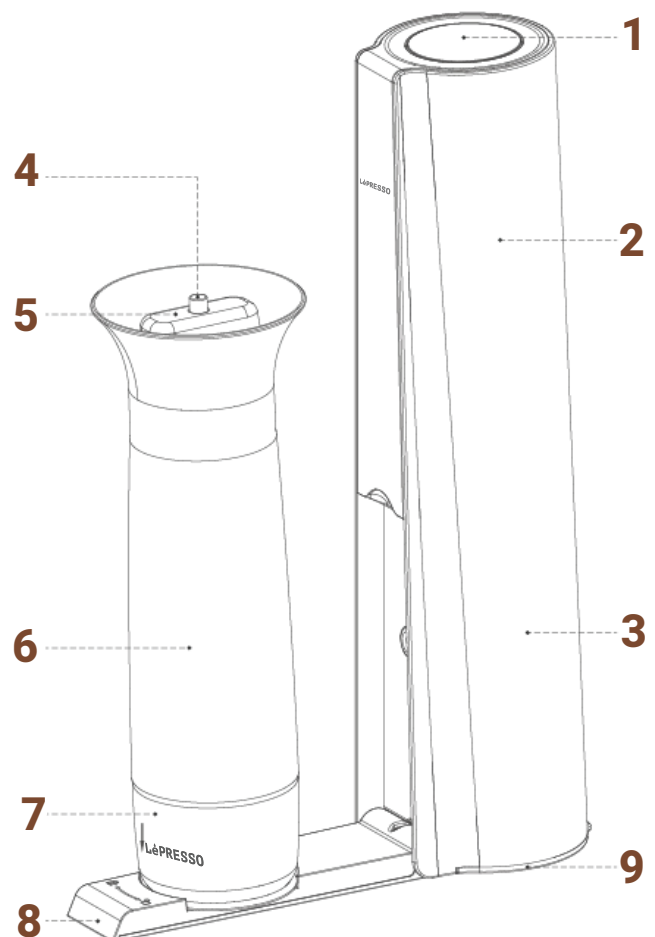
<b>Overview</b>	<b>2</b>
<b>Schematic View</b>	<b>2</b>
<b>Installing the CO<sub>2</sub> Cylinder</b>	<b>3</b>
<b>Removing the CO<sub>2</sub> Cylinder</b>	<b>3</b>
<b>Making Carbonated Beverages</b>	<b>3</b>
<b>Cleaning the Machine</b>	<b>5</b>
<b>Cleaning the Bottle</b>	<b>5</b>
<b>Specifications</b>	<b>6</b>
<b>Safety Precautions</b>	<b>6</b>
<b>Warranty</b>	<b>9</b>
<b>Contact Us</b>	<b>9</b>

# Overview

Before using the product, please carefully read this User Manual to guarantee correct usage and keep it secure for future reference. Our commitment is to provide not only sophisticated technology but also intuitive usability. Our products undergo rigorous development and testing processes to ensure they meet the high standards expected by our customers. Every component is meticulously designed and configured to enhance overall functionality and user interaction. We integrate only the highest-quality materials and components to ensure durability and optimal performance. Each product undergoes extensive functional and durability testing, which includes real-world scenarios to ensure the product performs reliably under typical usage conditions. Specific tests for electronic components are conducted in state-of-the-art facilities to ensure top-notch performance and longevity. This commitment to quality ensures reliability, durability, and exceptional user experience.

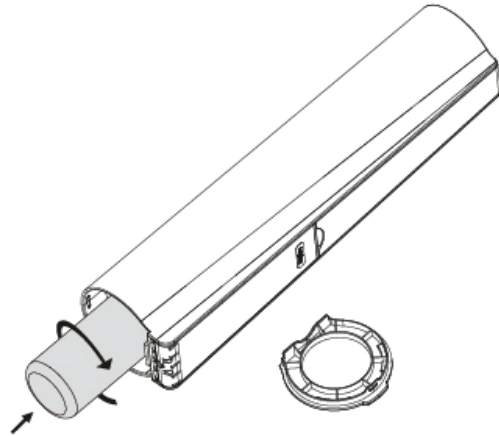
## Schematic View

1. Charging Button
2. CO<sub>2</sub> Cylinder (Internal)
3. Column
4. Release Button
5. Bottle Cap
6. Bottle
7. Bottle Base
8. Base
9. Bottom Cover



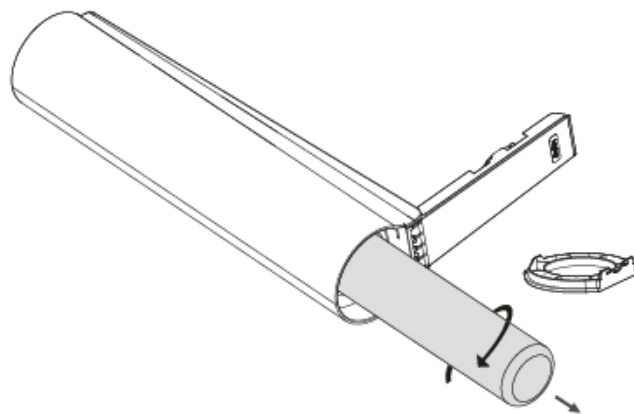
# Installing the CO<sub>2</sub> Cylinder

1. Tilt the device and remove the bottom cover.
  2. Insert the CO<sub>2</sub> cylinder into the designated compartment at the bottom of the device.
  3. Twist it clockwise to secure it, and reattach the bottom cover.
- Note:** Ensure that your device is placed upright on a flat surface.



# Removing the CO<sub>2</sub> Cylinder

1. Tilt the device and remove the bottom cover.
2. Twist the CO<sub>2</sub> cylinder counterclockwise to release it, then take it out.
3. Reattach the bottom cover.

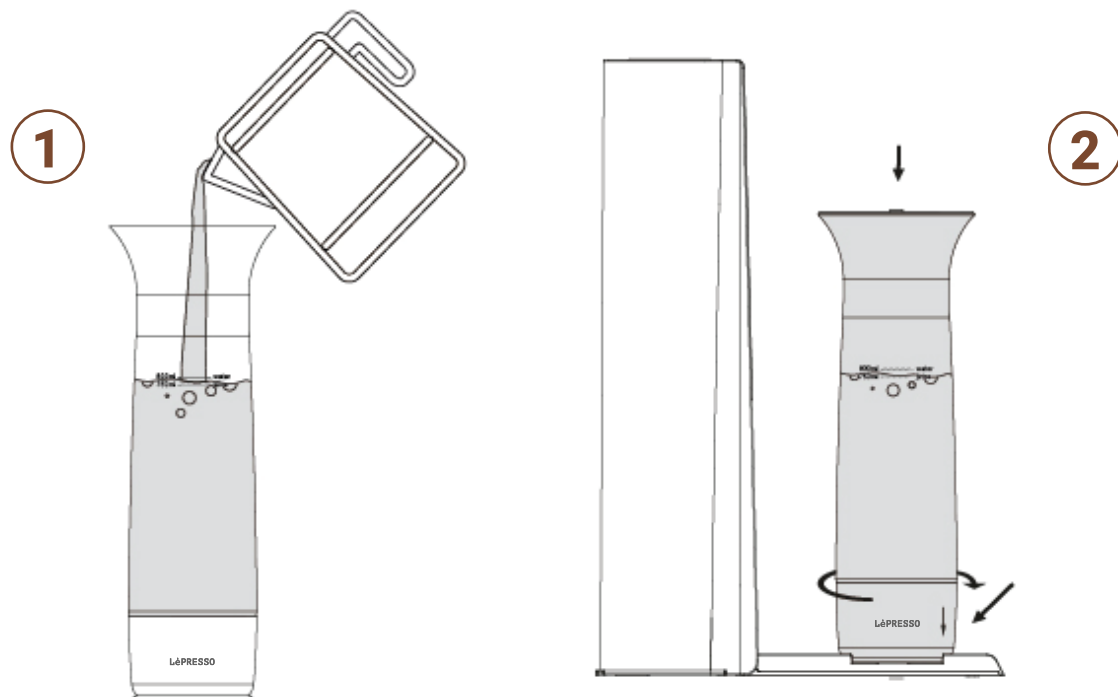


# Making Carbonated Beverages

1. Filling the bottle:
  - a. Sparkling Water: Fill the bottle with water up to the 800ml water line indicated on the bottle.

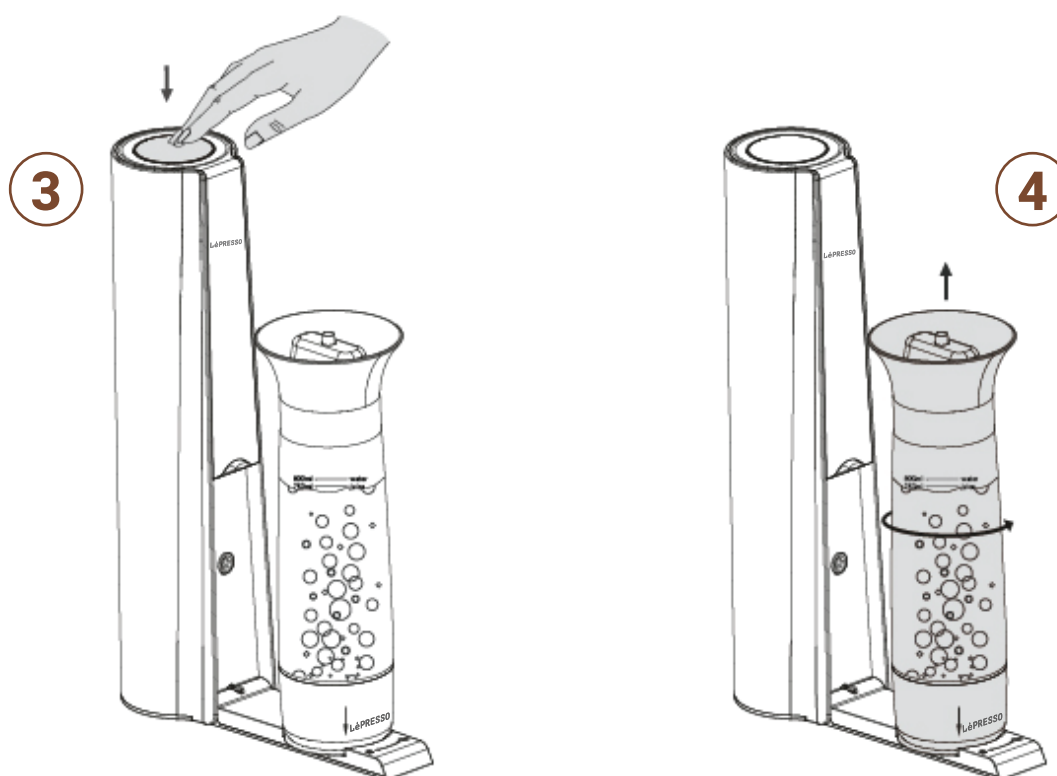
**b. Juice:** Add water and other ingredients, no more than 10% additional ingredients, up to the 750ml juice.

**2.** Place the bottle on the base of the machine, then twist it clockwise to secure it

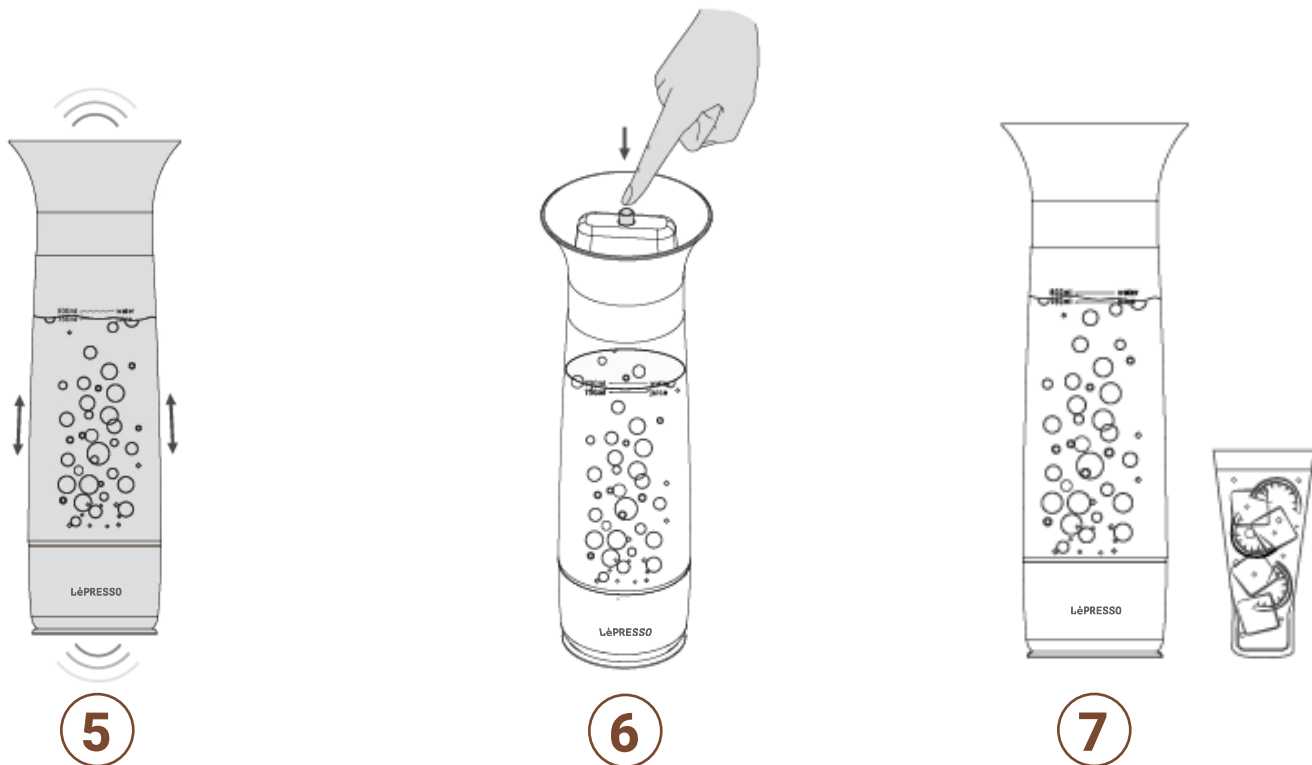


**3.** Press and hold the carbonation button. Release it after hearing a hissing sound for about 3 seconds.

**4.** Twist the bottle counterclockwise and remove it from the device.



5. Firmly hold the bottle and shake it up and down 4 to 5 times to help dissolve the carbonation into the water.
6. Keep the bottle upright and press the release button at the bottom to release any excess gas.
7. Open the cap and enjoy your freshly made sparkling water.



## Cleaning the Machine

1. Wipe with a damp cloth using clean water.
2. Do not use any corrosive solvents, as they may damage the surface of the machine.
3. Do not submerge the carbonated water machine in water for cleaning.

## Cleaning the Bottle

1. Before first use, rinse with clean water. The temperature should not exceed 40°C / 120°F. Use a long-handled sponge brush for thorough cleaning.
2. Do not use a dishwasher to clean or dry the bottle, and do not place it in the freezer, as this may damage the bottle.
3. After cleaning, if the bottle will not be used immediately, leave the cap

open to air dry and allow any remaining moisture to evaporate.

**4.** Avoid leaving the bottle in a water-filled container for extended periods, as this may cause the plastic to warp.

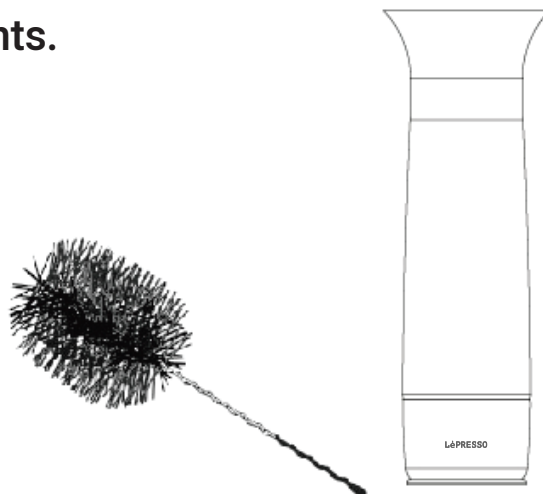
## Specifications

Capacity	800ml
Dimensions	129×239×445mm
Max Working Pressure	0.65MPa
Materials	PCTG,Stainless Steel

## Safety Precautions

### 1. Rinsing the water bottle

To clean the water bottle, use clean tepid water with a mild detergent. If using a bottle brush, ensure it is specifically designed for cleaning plastic bottles and does not cause scratches. Avoid using solvents, strong detergents, or cleaners with abrasive ingredients.



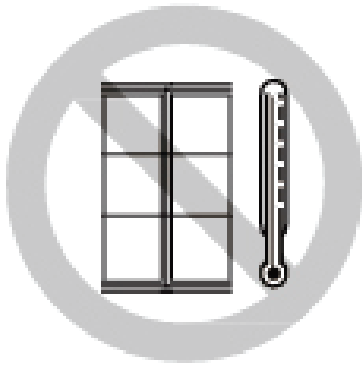
### 2. Never Clean the Water Bottle in the Dishwasher

The water bottle is designed to withstand pressures up to twice the working pressure of the machine. However, exposure to temperatures above 40°C can weaken this resistance. Since most dishwashers operate at very high temperatures, do not place the bottle in the dishwasher.

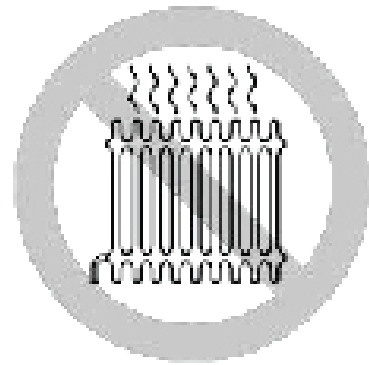


**3. Keep the sparkling water maker away from heat sources.**

The pressure inside the gas cylinder is affected by external temperature. This sparkling water maker is designed for use at room temperature. If the gas cylinder becomes too hot, it may be unsafe to operate the machine.



Do not place the machine in direct sunlight or near a sunny window.



Do not position near a hot radiator.

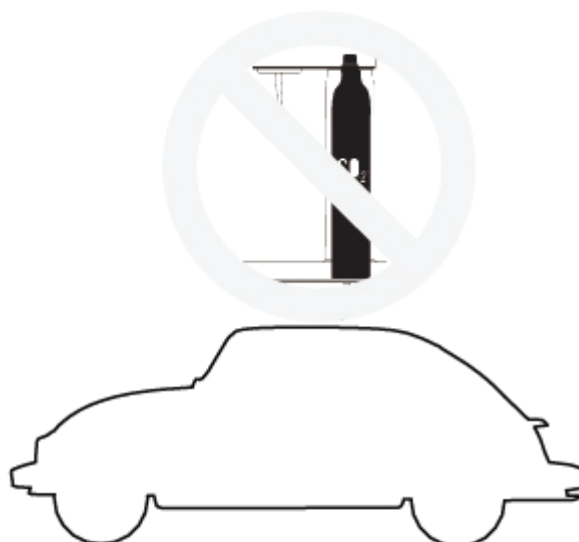


Keep the device away from open flames.



Avoid using the product in extremely hot environments.

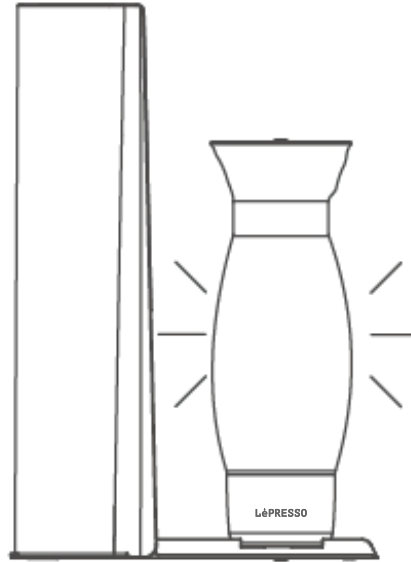
**4. Do not transport the product with the gas cylinder attached. Always detach the gas cylinder before transporting the machine.**





5. Never use a bottle that is deformed, discolored, or scratched.
6. Do not place the bottle in the freezer.
7. To prevent bacteria and odors, keep the bottle clean and store it without the cap screwed on.
8. **Warning:** Never inject gas into an empty water bottle.

Using an empty water bottle may cause excessive pressure, which could result in a safety hazard.

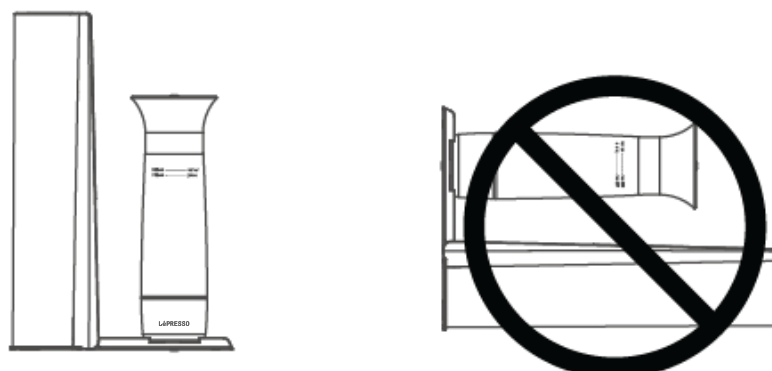


9. Keep the machine out of reach of children and infants.



10. Always Use the product in an upright position.

Using the device in any position other than upright may cause dangerous levels of CO<sub>2</sub> to accumulate in the water bottle during carbonation.



This device is compatible with standard 60L (14.5 oz) screw-in gas cylinders.



## Warranty

Products that you buy directly from our **LePresso** website or shop come with a 24-month warranty.

The 24-month warranty applies to products purchased directly from our **LePresso** website or store. If **LePresso** products are bought from any of our verified retailers, then the product is eligible for only a 12-month warranty. To extend your product's warranty, visit our website <https://www.lepresso.com/warranty> and fill in your details in the provided form along with an uploaded picture of the product to process your request. Once approved, you will receive a confirmation email of the extended product warranty. Upload the required information within 48 hours of purchase to be eligible for a 24-month warranty period.

For more info, please check:

<https://www.lepresso.com/warranty>

## Contact Us

If you have any questions or concerns about our Shipping and Returns Policy, please contact us at: [info@lepresso.com](mailto:info@lepresso.com)

Website: <https://www.lepresso.com/>

Instagram: [lepresso\\_official](https://www.instagram.com/lepresso_official)